

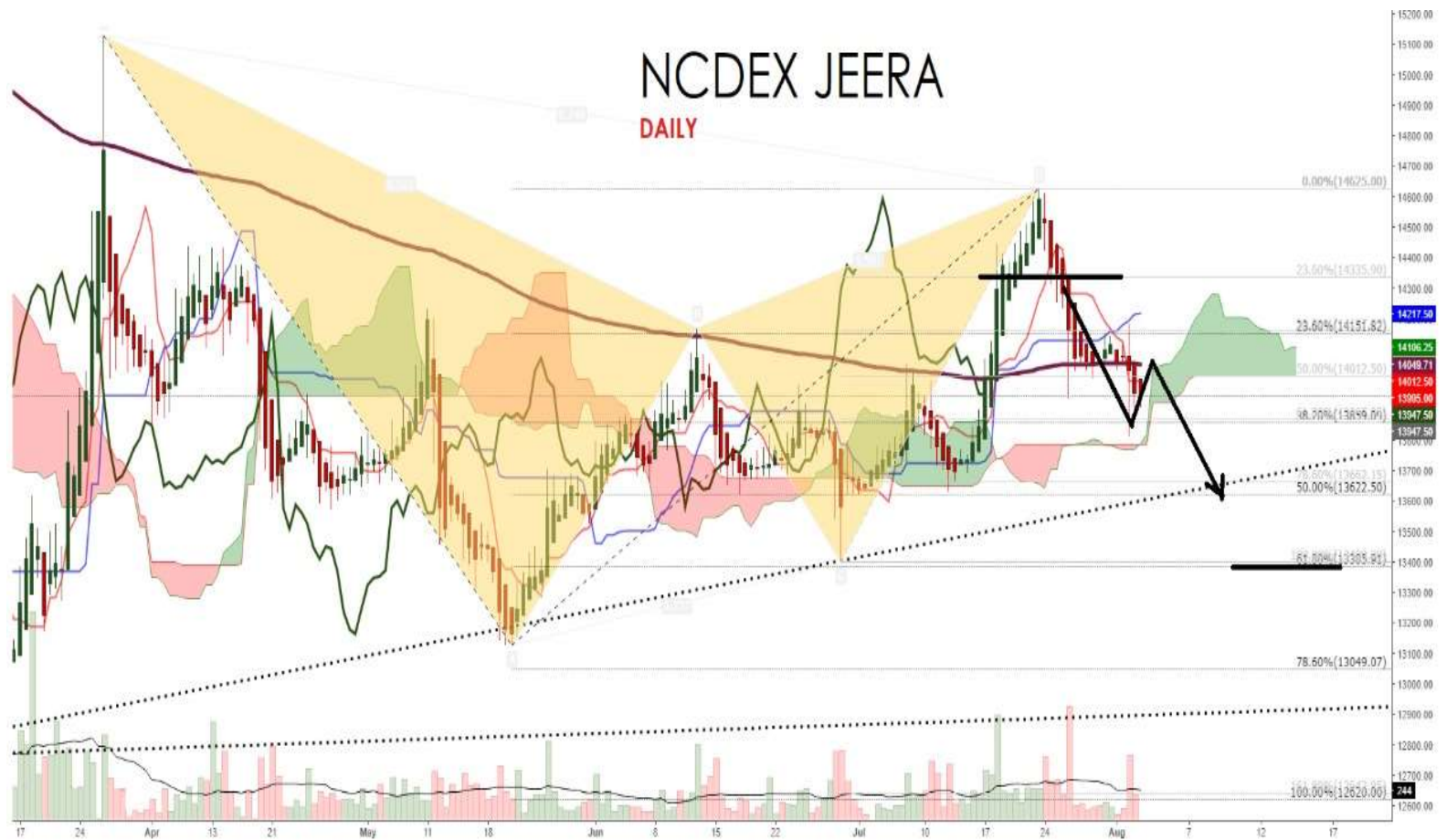
Current Market Price	Open	High	Low	Previous	%Change
13,900	14000	14,000	13,885	13,930	-0.22%

RSI	Stochastic	MACD	ADX	CCI	Williams %R
39.39	95.22	-39.35	31.25	-73.02	-6.10
Sell	Overbought	Sell	Sell	Sell	Overbought

Performance:

Daily	1 Week	1 Month	YTD	1 Year	3 Years
-0.22%	-1.14%	1.39%	-14.44%	-19.28%	-28.39%

Chart:



View: **SELL JEERA SEPT BELOW 13920 SL ABV 14220 TGT 13620-13400. NCDEX**

Technical Update:

Jeera forms a bearish harmonic pattern on daily chart.
Jeera breaks 200DMA at 14050 levels indicating bearish trend.

Kedia Stocks and Commodities Pvt. Ltd. Mumbai, India

For more details, please contact: Mobile: +91 9323406035 / 9619551022 / 9320096333

Email: info@kediaadvisory.com | URL: www.kediaadvisory.com